

ORDER CODE / SİPARİŞ KODU



	1	2	3	4	5	6	7	8	9	0	1
M	P										

Pos.1 - Mounting Flange / Montaj Bağlantısı

- omit - Oval mount, two holes
ihmal - Oval, iki delikli

F

- Oval mount, four holes / Oval 4 delikli

Q

- Square mount, four bolts / Kare contalı, 4 civatalı

W

- Wheelmount / Tekerlek Şekilli

Pos.2 - Option (needlebearings) / Seçenekler

- omit - none
ihmal - hiçbirşey

N

- with needlebearings

Pos.3 - Port type/Part Tipi

- omit - Side ports
ihmal - Yan portlar

E

- Rear ports / Arka portlar

Pos.4 - Displacement code / Hacim kodları

25*	- 25,0 cm ³ /rev
32*	- 32,0 cm ³ /rev
40*	- 40,0 cm ³ /rev
50	- 49,5 cm ³ /rev
80	- 79,2 cm ³ /rev
100	- 99,0 cm ³ /rev
125	- 123,8 cm ³ /rev
160	- 158,4 cm ³ /rev
200	- 198,0 cm ³ /rev
250	- 247,5 cm ³ /rev
315	- 316,8 cm ³ /rev
400	- 396,0 cm ³ /rev
500	- 495,0 cm ³ /rev
630	- 623,6 cm ³ /rev

Pos.5 - Shaft Extensions **/ Şaft Ölçüleri

C

- ø25 straight, Parallelkey A8x7x32 DIN6885 / düz paralel anahtarlı

VC

- ø25 straight, Parallelkey A8x7x32 DIN6885 / düz paralel anahtarlı
with corrosion resistant bushing /korozyona karşı dayanıklı yatak

CO

- ø1"straight, Parallelkey ¼"x¼"x1¼" Bs46 / düz paralel anahtarlı

VCO

- ø1"straight, Parallelkey ¼"x¼"x1¼" Bs46 / düz paralel anahtarlı
with corrosion resistant bushing/korozyona karşı dayanıklı yatak

SH

- ø25,32 splined Bs2059 (SAE6B) / Frezelenmiş

VSH

- ø25,32 splined Bs2059 (SAE6B) / Frezelenmiş
with corrosion resistant bushing /korozyona karşı dayanıklı yatak

K

- ø28,56 tapered 1:10, Parallelkey B5x5x14 DIN6885

SA

- ø24,5 splined B25x22 DIN5482 / Frezelenmiş

VSA

- ø24,5 splined B25x22 DIN5482 / Frezelenmiş
with corrosion resistant bushing /korozyona karşı dayanıklı yatak

CB

- ø32 straight, Parallelkey A10x8x45 DIN6885 / düz paralel anahtarlı

KB

- ø35 tapered 1:10, Parallelkey B6x6x20 DIN6885

SB

- splined A25x22 DIN5482 / Frezelenmiş

OB

- ø1¼" tapered 1:8, Parallelkey 5/16"x5/16"x1¼" BS46

HB

- ø1¼" splined 14T ANSI B92.1 - 1976 / Frezelenmiş

Pos.6 - Shaft Seal Version / Şaft conta versiyonu

- omit - Low pressure shaft seal or Standard shaft seal
ihmal - Düşük basınç şaft conta yada standart şaft conta
for "... B " shaft

D

- Standard shaft seal / Standart şaft çanta

U

- High pressure shaft seal (without check valves)
- Yüksek basınç şaft conta (valfle kontrol etmeden)

Pos.7 - Drain Port / Sızıntı Hattı

- omit - with drain port
ihmal - sızıntı hattı

1

- without drain port / sızıntı hattı olmadan

Pos.8 - Ports / Portlar

- omit - BSPP (ISO228)
M - Metric (ISO262)
- Metrik (ISO262)

Pos.9 - Special Features / Özel özellikler

Pos.10 - Design Series / Dizayn Seriler

- omit - Factory specified / Fabrikada belirtilen

TEKNİK ÖZELLİKLER / SPECIFICATION DATA

Tipi/Type	MP 25	MP 32	MP 40	MP 50	MP 80	MP 100	MP 125	MP 160	MP 200	MP 250	MP 315	MP 400	MP 500	MP 630	
Displacement / İletilen Hacim (cm ³ /rev.)	25	32.0	40.0	49.5	79.2	99	123.8	158.4	198	247.5	316.8	396	495	623.6	
Max. Speed (Max. hız) (RPM)	cont./Devamlı	1600	1560	1500	1210	755	605	486	378	303	242	190	150	120	95
	int.* / Aralıklı	1800	1720	1750	1515	945	755	605	472	375	303	236	189	150	120
Max. Torque (Max. Tork) (daNm)	cont./Devamlı	3.3	4.3	6.2	9.4	15.1	19.3	23.7	31.3	36.6	47	48.6	50	39	44
	int.* / Aralıklı	4.7	6.1	8.2	11.9	19.5	23.7	29.8	37.8	45.6	58.3	56	59	57	64
	peak** / Pik	6.7	8.6	10.7	14.3	22.4	27.5	36.5	43.8	55	68.5	85	85.4	78	82
Max. Output (Max. Çıkış) (kW)	cont./Devamlı	4.5	5.8	8.4	10.1	10.2	10.5	10	10.1	10	9.5	7.6	6.2	3.5	3.3
	int.* / Aralıklı	6.1	7.8	11.6	12.2	12.5	12.8	12	12.1	12	12	9	7.8	7.2	5.6
Max. Pressure Drop (Max. Basınç Düşümü) (bar)	cont./Devamlı	100	100	120	140	140	140	140	140	140	140	120	95	60	55
	int.* / Aralıklı	140	140	155	175	175	175	175	175	175	175	140	115	90	80
	peak** / Pik	225	225	225	225	225	225	225	225	225	225	225	180	130	110
Max. Oil Flow (Max. Yağ Akışı) (l/min)	cont./Devamlı	40	50	60	60	60	60	60	60	60	60	60	60	60	60
	int.* / Aralıklı	45	55	70	75	75	75	75	75	75	75	75	75	75	75
Max. Inlet Pressure (Max. Griş Basıncı) (bar)	cont./Devamlı	175	175	175	175	175	175	175	175	175	175	175	175	140	140
	int.* / Aralıklı	200	200	200	200	200	200	200	200	200	200	200	200	175	175
	peak** / Pik	225	225	225	225	225	225	225	225	225	225	225	225	225	225
Max. Return Pressure w/o Drain Line or Max. Pressure in Drain (bar) (Dreyn hatsız ve dreyn hattındaki max. basınç)	cont. 0-100 RPM	150	150	150	150	100	100	100	100	100	100	100	100	150	150
	cont. 300-600 RPM	75	75	75	75	30	30	30	30	30	30	30	30	75	-
	cont. 300-600 RPM	50	50	50	50	15	15	15	15	15	-	-	-	-	-
	cont. > 600 RPM	20	20	20	20	-	-	-	-	-	-	-	-	-	-
	int.* 0 - max.RPM	150	150	150	150	100	100	100	100	100	100	100	100	150	150
Max. Return Pressure with Drain Line (bar) (Dreyn hatlı max dönüş basınç)	cont./Devamlı	175	175	175	175	175	175	175	175	175	175	175	175	140	140
	int.* / Aralıklı	200	200	200	200	200	200	200	200	200	200	200	200	175	175
	peak** / Pik	225	225	225	225	225	225	225	225	225	225	225	225	225	225
Max. Starting Pressure with Unloaded Shaft, (bar) (Yüklemesiz şaft ile başlama basıncı)		10	10	10	10	10	10	9	8	7	6	5	5	5	5
Min Starting Torque (min başlama Torku) (daNm)	at max. press. drop. cont.	3	4	5.4	7.8		16.6	10.7	28.2	33.5	42.8	45.8	45.8	36	41.5
	at max. press. drop. Int.*	4.2	5.6	6.9	10	6(6.5)	21	26.6	35.5	42.6	54.2	61.9	60.8	54	62
Min. Speed***, (RPM)		20	15	10	10		10	10	10	10	10	10	10	10	10
weight, agv. (kg)	MP(F)	5.6	5.6	5.7	5.8		6.2(6.7)							8.9	9.5
	MPF(E)...B							6.3(6.7)	6.5(6.9)	6.7(7.2)	6.9(7.4)	7.2(7.7)	7.7(8.2)		
	MPQ(N)				5.2									8.3	9.0
	MP(F)(N)E				6.3									9.3	10
	MPW(N)				5.5									8.8	
	MPQ(N)E				5.7										8.5

* Intermittent operation: The permissible values may occur for max. 10% of every minute.

** Peak load: The permissible values may occur for max. 1% of every minute.

*** For speed of 5 RPM lower than even consult factory or your regional manager.

1) Intermittent speed and Intermittent pressure must not occur simultaneously.

2) Recommended filtration is per ISO clean lines code 20/16. A nominal filtration of 25 micron or better.

3) Recommend using a premium quality, anti-wear type mineral based hydraulic oil, HLP (DIN51524) or HM (ISO 6743/4) if using synthetic fluids consult the factory for alternative seal materials.

4) Recommended minimum oil viscosity 13 mm²/s at 50 C.

5) Recommended maximum system operation temperature is 82 C

6) To assure optimum motor life fill with fluid prior to loading and run at moderate load and speed for 10-15 minutes.

* Aralıklı Operasyonu: İzin verilebilir değerler her dakikanın maks %10 için oluşabilir.

** Aşırı Yük: Müsaade edilebilir değerler her dakikanın %1 için oluşabilir.

*** 10 RPM ve aşağısı hızlar için fabrikaya veya bölge bayiliğine başvurunuz.

1) Aralıklı hız ve aralıklı basınç düşüşleri aynı zamanda olmalıdır.

2) Tavsiye edilen filtrasyon ISO 20/16, nominal filtrasyon 25 mikron ve iyisi.

3) Tavsiye edilen hidrolik yağ üstün kalitede anti-wear tipi mineral kökenlidir.

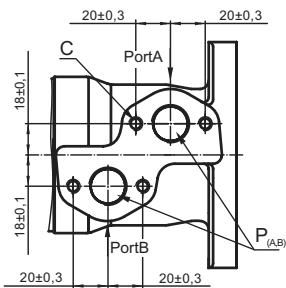
4) Tavsiye edilen en düşük yağ viskozitesi operasyon sıcaklığının 133 mm²/s'dir.

5) Tavsiye edilen en yüksek sistem operasyon sıcaklığı 82 C dir.

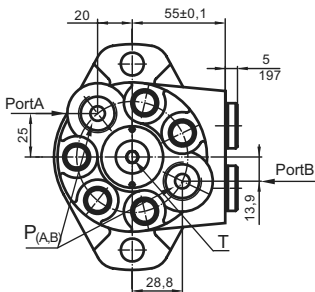
6) En uzun motor ömrünü sağlamak için yüklenmeden önce sıvı ile doldurulup düşük bir yük ve hızda 10-15 dk. çalıştırılır.

PORTING / BAĞLAMA

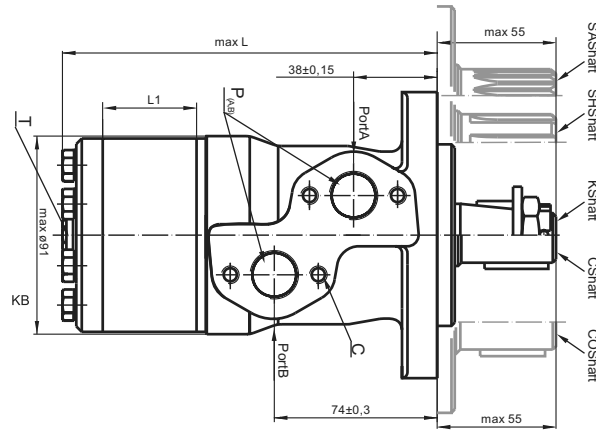
S Side Ports / Yan Portlar



E Rear Ports / Yan Portlar

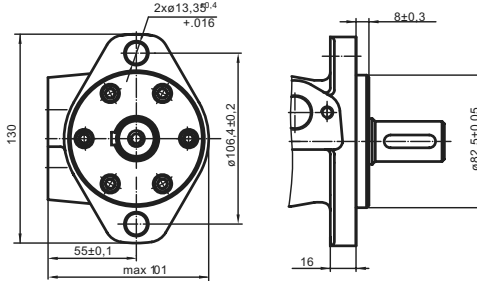


C : 4xM8 -13 mm depth
P_(A,B) : 2x G 1/2 or 2x M 22 x 1, 5 - 15 mm depth
T : G1/4 or M14x1,5 - 12 mm depth(plugged)

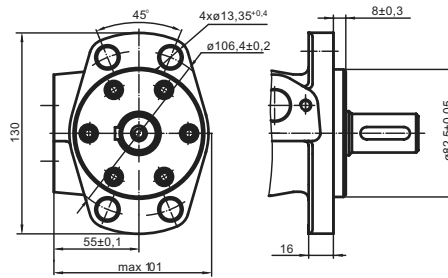


MOUNTING / MONTAJ

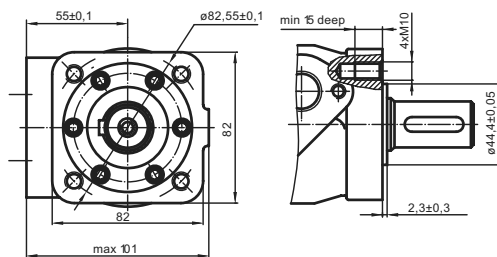
Oval Mount(2 Holes) / Oval Şekli (2 delikli)



F - Oval Mount (4Holes) / Oval Şekli (4 delikli)

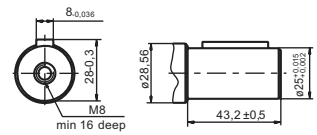


Q - Square Mount (4Bolts)/ Kare Şekli (4 civatalı)

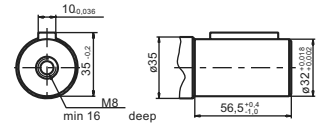


SHAFT EXTENSIONS/ ŞAFT ÖZELLİKLERİ

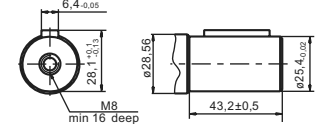
C -ø25 straight, Paralel key A8x7x32 DIN6885
Max. Torque 34daNm



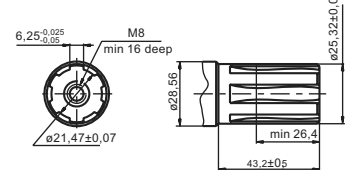
Cb -ø32 straight, Paralelkey A10x8x45 DIN6885
Max. Torque 77daNm



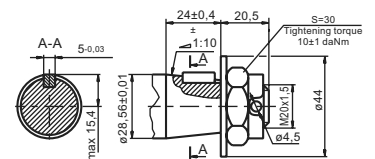
CO -ø1" straight, Paralelkey 1/4"x1/4"x11/4"BS46
Max. Torque 34daNm



SH - splined, BS 2059 (SAE6B)
Max. Torque 40daNm



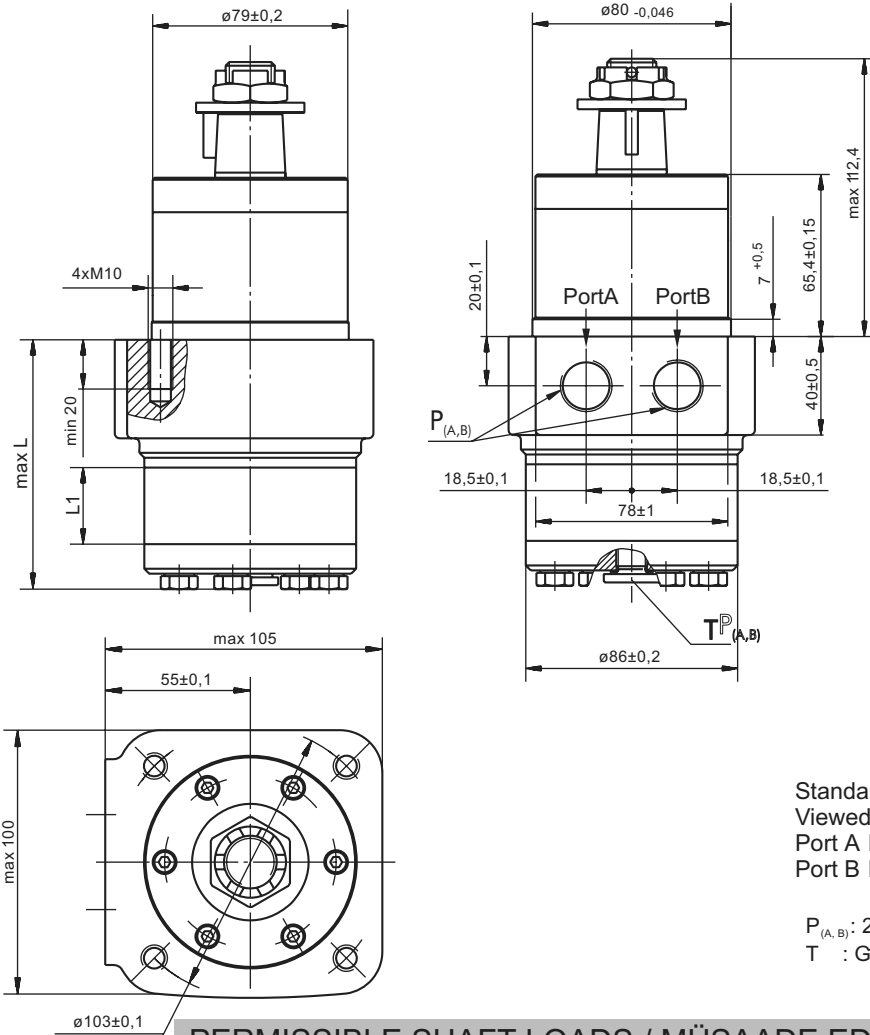
K -tapered 1:10, Paralelkey B5x5x14 DIN 6885
Max. Torque 40 daNm



Type/Tipi	L,mm	Type/Tipi	L,mm	Type/Tipi	L,mm	Type/Tipi	L,mm	L,mm
MP(F) 25	134,0	MP Q 25	140,5	MP(F)E 25	151,5	MP QE 25	158,0	5,20
MP(F) 32	135,0	MPQ 32	141,5	MP(F)E 32	152,5	MPQE 32	159,0	6,30
MP(F) 40	136,5	MPQ 40	142,5	MP(F)E 40	154,0	MPQE 40	160,0	7,40
MP(F) 50	135,5	MPQ 50	142,0	MP(F)E 50	153,0	MPQE 50	159,5	6,67
MP(F) 80	139,5	MPQ 80	146,0	MP(F)E 80	157,0	MPQE 80	163,0	10,67
MP(F) 100	142,0	MPQ 100	148,5	MP(F)E 100	160,0	MPQE 100	166,0	13,33
MP(F) 125	145,5	MPQ 125	152,0	MP(F)E 125	163,0	MPQE 125	169,5	16,67
MP(F) 160	150,0	MPQ 160	156,5	MP(F)E 160	168,0	MPQE 160	174,0	21,33
MP(F) 200	155,5	MPQ 200	162,0	MP(F)E 200	173,0	MPQE 200	179,5	26,67
MP(F) 250	162,0	MPQ 250	168,5	MP(F)E 250	180,0	MPQE 250	186,0	33,33
MP(F) 315	171,5	MPQ 315	178,0	MP(F)E 315	189,0	MPQE 315	195,5	42,67
MP(F) 400	182,0	MPQ 400	188,5	MP(F)E 400	200,0	MPQE 400	206,0	53,33
MP(F) 500	195,5	MPQ 500	202,0	MP(F)E 500	213,0	MPQE 500	219,5	66,63
MP(F) 630	213,0	MPQ 630	219,0	MP(F)E 630	230,5	MPQE 630	236,5	84,00

DIMENSIONS AND MOUNTING DATA -MPW ÖLÇÜLENDİRME VE MONTAJ BİLGİLERİ - MPW

W - Wheel Mount / Yürüyüş Motoru



Type/Tipi	L,mm	L ₁ ,mm
MP W 25	77,0	5,20
MP W 32	78,0	6,30
MP W 40	79,5	7,40
MPW 50	78,5	6,67
MPW 80	82,5	10,67
MPW 100	85,0	13,33
MPW 125	88,5	16,67
MPW 160	93,0	21,33
MPW 200	98,5	26,67
MPW 250	105,0	33,33
MPW 315	114,5	42,67
MPW 400	125,0	53,33
MPW 500	138,5	66,63
MPW 630	156,0	84,00



Standard Rotation Viewed from Shaft End
 Reverse Rotation Viewed from Shaft End
 Port A Pressurized CW
 Port B Pressurized CCW

P_(A,B): 2x G 1/2 or 2x M 22 x 1,5 - 15 mm depth
 T : G1/4 or M14 x 1,5 - 12 mm depth (plugged)

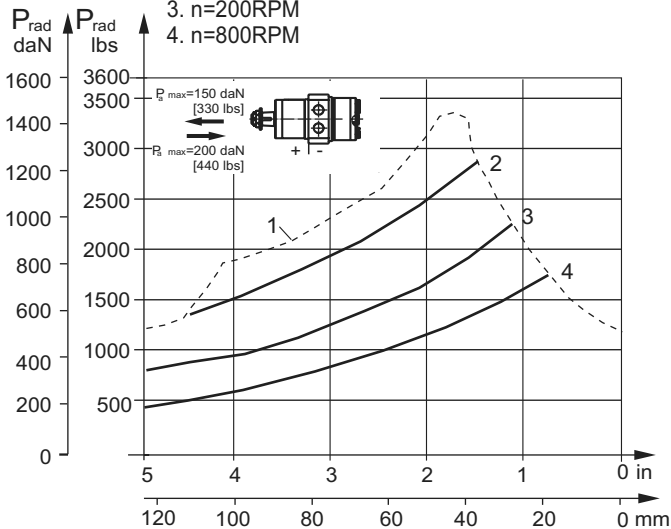
PERMISSIBLE SHAFT LOADS / MÜSAADE EDİLEN ŞAFT YÜKLEMELERİ

MPWN

MPW

The curves apply to a B10 bearing life of 2000 hours.

1. Max. radial shaft load / Mak. radyal şaft yüklemesi
2. n= 50RPM
3. n=200RPM
4. n=800RPM



1. Max. radial shaft load / Mak. radyal şaft yüklemesi
2. n=300RPM
3. n=500RPM
4. n=800RPM

